

CRP-RH14-06-W

INDUSTRIAL ROBOT WELDING APPLICATION



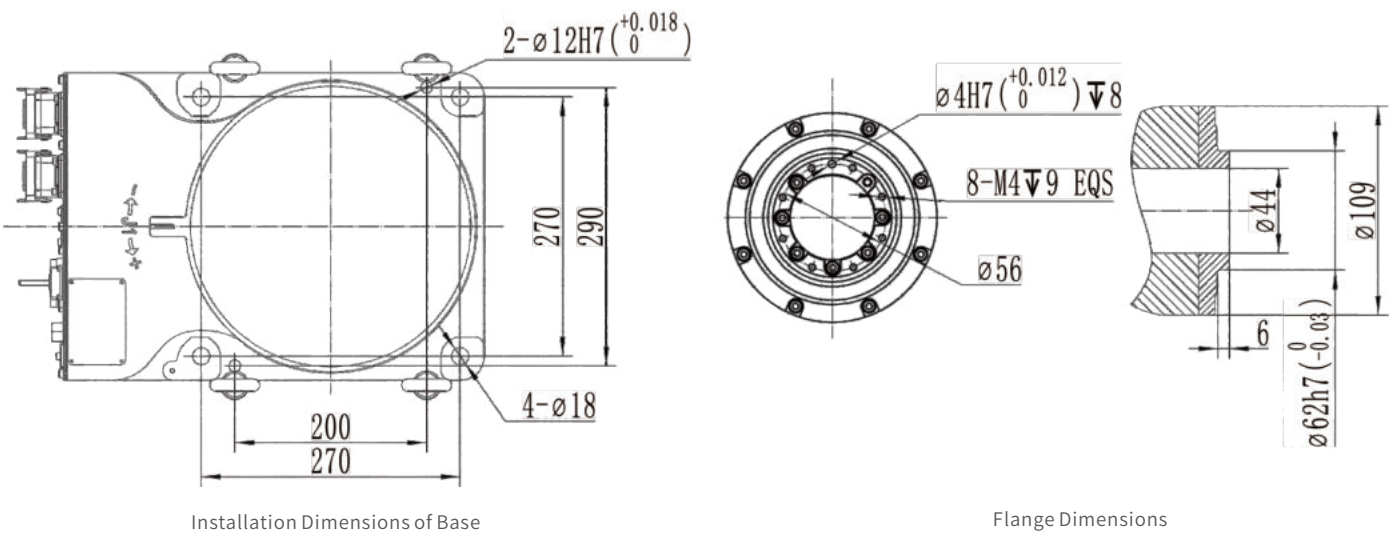
FUNCTIONAL FEATURES

- Use high-speed motor, and do software optimization, the overall beat is 20% faster than the previous generation;
- Lighter weight, smaller forearm size, better accessibility;
- High protection :1,2 shafts are equipped with dustproof cover, and fully surrounded welding gun is used at the same time;
- J4,J6 axis hollow structure, can use hollow welding gun;
- Built-in user line, gas pipe, welding cable, smooth body, clean appearance;

ROBOT BODY TECHNICAL PARAMETERS

Model		CRP-RH14-06-W
Arm form		Vertical multiple joints
Degree of freedom		6 axis
Maximum payload		6kg
Maximum travel	Axis 1	±168°
	Axis 2	-50~+170°
	Axis 3	-78~+150°
	Axis 4	±190°
	Axis 5	-110~+130°
	Axis 6	±190°
Maximum speed	Axis 1	230°/S
	Axis 2	230°/S
	Axis 3	230°/S
	Axis 4	430°/S
	Axis 5	430°/S
	Axis 6	630°/S
Allowable torque	Axis 4	10N.m
	Axis 5	10N.m
	Axis 6	3N.m
Allowable moment of inertia	Axis 4	0.25kg.m ²
	Axis 5	0.25kg.m ²
	Axis 6	0.05kg.m ²
Repeated positioning accuracy		±0.08mm
Maximum reaching distance		1468mm
Robot body weight		155kg
Installation mode		Ground、TOP mount
Installation environment	ambient temperature	0~45°C
	relative humidity	20~80%(No condensation)
	vibration	Under 0.5 G
	Others	Robot installation must be away from: flammable or corrosive liquids or gases, electrical sources of interference
Electric Cabinet Configuration		G9
IP level		Ip56
Advantage features		Compact structure, high speed, high precision, high expansibility and easy operation
Application		Welding

INSTALLATION INTERFACE DIAGRAM



WORKING RANGE DIAGRAM

